

**FEDERAL DEMOCRATIC REPUBLIC OF
ETHIOPIA
MINISTRY OF AGRICULTURE & NATURAL
RESOURCES
Plant Health Regulatory Directorate
Migratory Pest Survey and Control Case Team**



DESERT LOCUST BULLETIN DECEMBER 2016

ISSUE NO. 131

Tel: 011 6461147
Fax: 011-6 - 4 6 11 47
e-mail: zebdewosalato@yahoo.com,
solomonmirete7@gmail.com

Introduction

In December, Desert Locust situation remained calm throughout Ethiopia. Desert locust survey was not conducted, however information from regional DL focal persons and DL scouts shows the absence of Desert locust in Eastern Ethiopian, Somali region areas where winter breeding takes place. Most of the annual vegetation and the soil was dry, In general the conditions were not favorable hence; the locust situation appeared calm throughout the month.

Ecological conditions

Vegetation status – Generally the annual vegetation was dry in which desert locust Winter breeding is used to take place.

Temperature – The temperature has increased and sunny weather condition prevailed in most part of the country including desert locust winter breeding areas.

Rainfall – In most part of Ethiopian Somali region where Desert locust winter breeding takes place did not receive rainfall during the whole month.

Desert Locust Situation-

The locust situation becomes calm during December in winter breeding areas.

Forecasting

The desert locust status in Ethiopia will remain calm in January too. However, Close monitoring of the situation is highly required because information from Northern Somalia shows that breeding is happen in that area.

OVERVIEW OF SURVEY AND CONTROL CAPACITY IN ETHIOPIA

Two 4WD pickup vehicles are available for regular locust operation.

Sprayers available in central store (Addis Ababa):

- Mist blower AU 8000 - 36
- Spinning disk - 170
- Vehicle mounted sprayers - 8
- E-Pesticide loading pumps - 12

Pesticides available in central store (Addis Ababa)

- ULV - 1000 lit.
- EC - 14,000 lit.

Pesticides available in central store (Dire Dawa and Somali Admin.Regions)

- ULV - 120 lit.

Survey and Communication equipments available in locust unit (Addis Ababa):-

- e Locust 2 - 6 – 2 of them are in the Regions.
- eLocust 3 - 6
- Tachometer - 24
- GPS - 26
- Compass - 6
- Anemometer - 6
- Stop watch - 6

Staff composition

In the Plant Health Regulatory Directorate of the Ministry of Agriculture and Natural Resources, the migratory survey and control case team is composed of:-

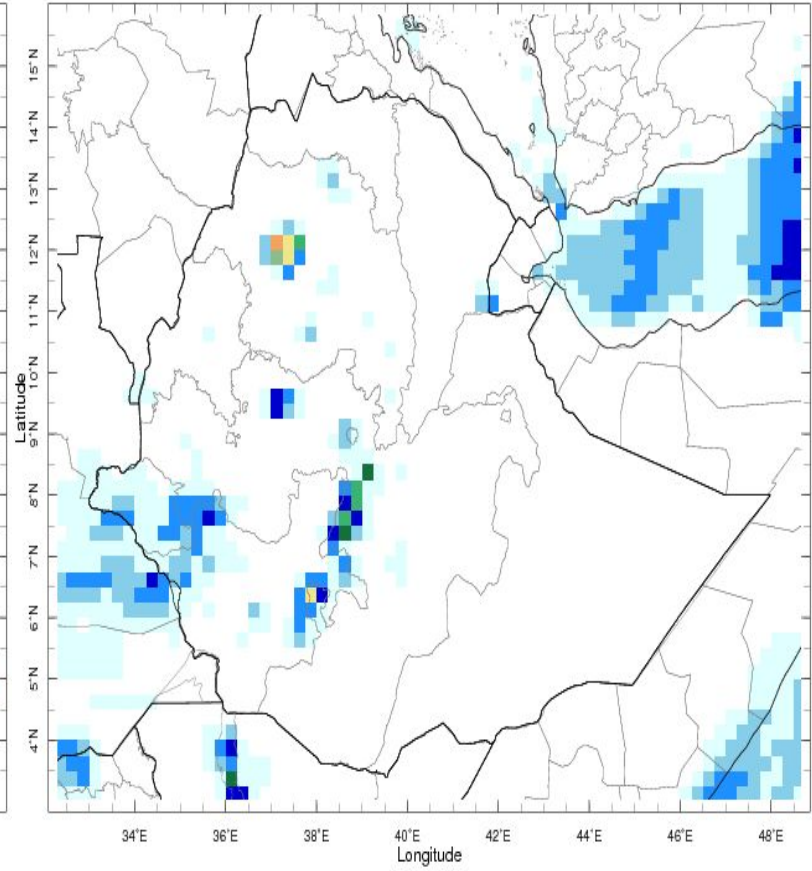
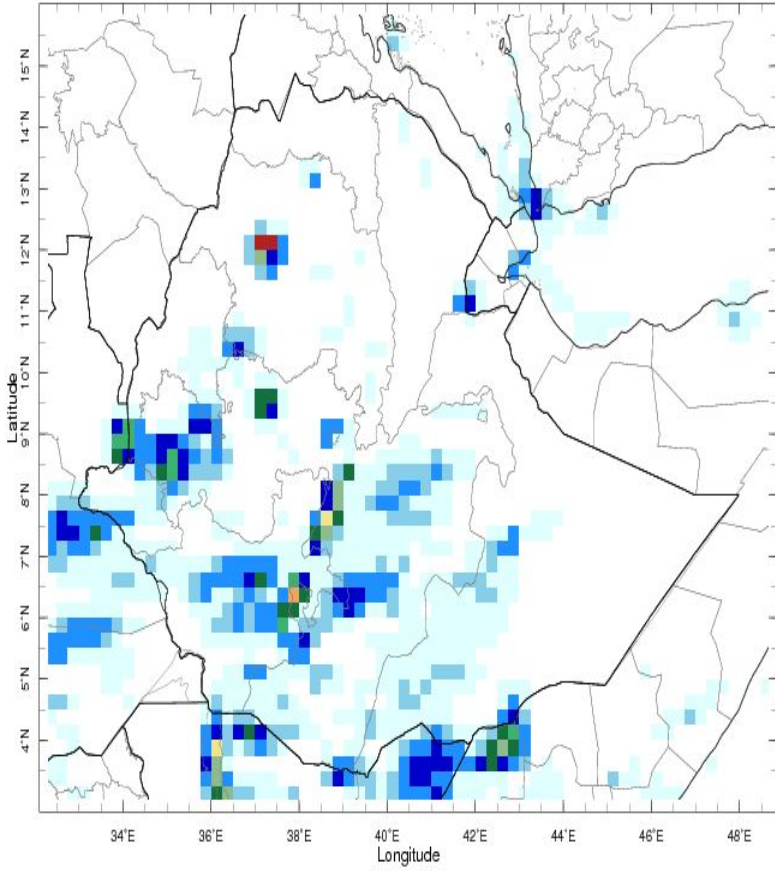
- 3 entomologists (two of them are locust officers) and 1 pesticide and sprayers use
- At Regional Administrative level
- Plant Health Clinics (16 PHCs) -15 crop protection experts among these 6 are Locust Focal Persons and 5 more technicians
- 26 Scouts (at locust prone districts)

DISTRIBUTION LIST

This bulletin is distributed to the following:-

- DLIS -Rome
- CRC-EMPRES/CR
- Ministry of Agriculture, Ethiopia
- Regional Bureaus of Agriculture
- WFP - Ethiopia
- Neighboring countries (Sudan, Eritrea, Yemen, Egypt, Oman, Djibouti, Somalia, Saudi Arabia et
- FAO - Ethiopia
- UNDP - Ethiopia
- USAID - Ethiopia
- USAID/OFDA – USA
- DLCO-EA

Rainfall Estimates for 1st and 2nd decades of December 2016 in Ethiopia



1-10 Dec 2016

10 Dec 2016

